



Work by Katlyn Krauskop '25, Fine Art.

## Upcoming Events

**April 8** Solar Eclipse, in Lancaster the eclipse will begin at 2:06 p.m., reach its height at 3:22 p.m., and end at 4:34 p.m. *Observe safely. Don't look directly at the sun.*

**April 11** Fine Art Artist Talk, **Nichola Kinch**, 12:45 pm, Atrium (*see below*)

**April 12** Admissions Rock Lititz Tours

**April 13** Deadline for Faculty grant applications (*see below*)

**April 14** CCE Art at Brunch, Zoetropolis, 11 am to 2 pm (*see below*)

**April 17** Chairs Council meeting, 11:30 am to 1 pm

**April 18** Senior Staff meeting, 9 am, The LookOut

**April 18** Plays on Prince Presents 8x10, 7-9 pm, CoLab

**April 19** AGA 5-second Film Festival by SIGGRAPH, 3:30-6 pm, Atrium

**April 19** Fellows' Reception, 5-8 pm

**April 20** Admissions Admitted Student Day

If you have news, an event, or an announcement you'd like to share, please email Jen Kopf, at [jkopf@pcad.edu](mailto:jkopf@pcad.edu) or [share in this document](#).

---

## Faculty Life grant application deadline nears

A new Faculty Grant cycle is now open for applications, and there are two kinds of opportunities open to all full-time, part-time, adjunct, and CCE faculty:

- **The PCA&D Faculty Educator's Professional Development Grant** provides supportive funding for the College's faculty participation in activities and events related to their professional development as an educator. Examples of this are (but are not limited to) curriculum development, pedagogy, conference attendance/participation, workshops, and anything relating to educational skill development.
- **The PCA&D Faculty Research and Practice Professional Development Grant** provides supportive funding for professional growth and development within a faculty member's field of interest. Examples of this are (but are not limited to) exhibition participation, research, travel, residency, and publishing.

**The deadline for applying for the Spring round of grants is Saturday, April 13.**

More details, and the applications, can be found in the links below:

***Educator's Professional Development Grant - [Spring 2024 here](#)***

***Research & Practice Professional Development Grant - [Spring 2024 here](#)***

---



## CT&L Corner: What do we lose with using AI?

From **Dr. Adam Smith**, Director of the Center for Teaching & Learning and Manager of the Learning Commons:

VOX Video: [AI Can do your homework. Now What?](#)

In my line of work, we try to rely on sources a bit more primary than YouTube, but I saw this on my social media feed and had to explore. In it, the narrator guides us to two paths in response to generative AI: one is to work with it, and the other is to work against it. “Ok,” I said, “I’ve seen this movie before.” Yet, then the video went on to articulate something that I’ve been thinking and seeing in the discourse of other people working in Centers for Teaching and Learning...

The video continues: Generative AI isn’t a tool in the same way that a calculator is. Calculators do the work that students program them to do; in other words, they still rely on someone at the wheel, so to speak. Generative AI needs to be prompted, yes, but that’s all of the input required.

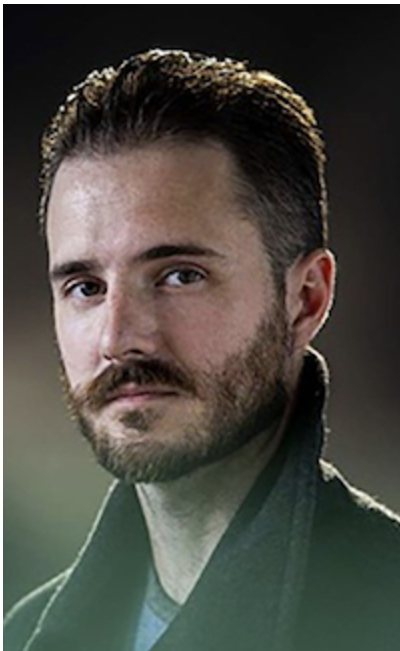
What makes this video interesting to me is that it lands (at timestamp 11:18, linked in the video description) in a discussion on what is lost: the effort that connects to learning. Using a great analogy of GPS mobile apps, studies show that use of these apps correlates with poorer spatial navigation: we don’t learn anything from just following along with the app. Learning to navigate requires decision-making, which is exactly what Google Maps does FOR us.

Citing research from **Louis Deslauriers**, a science educator at Harvard University, the video then addresses the [‘The Dangers of Fluent Lectures’](#) (re: TED Talks). When presented with a fluent lecture, students believe they’re learning more than in an active

learning condition, where they need to apply and test themselves on material. This 'feeling' is mistaken, however, as the active learning condition consistently produces better results. While research shows that students tend to study by rereading notes, this 'active learning' benefit suggests that studying should focus on what researchers call 'desirable difficulties:' seeking out relevant challenges such as self-testing or explaining the material in their own words (maybe even teaching it to someone else).

These challenges are lost when AI engages in that struggle on our behalf. If our goal is for our students to improve at a particular skill, we have to understand that students may interpret an initial struggle as evidence of NOT learning. It challenges us to create learning environments where students can struggle productively, with guidance, feedback, and without undue penalties on their initial efforts.

What debates about use (or non-use) of AI in the classroom often fail to address is the purpose of our assignments. Why do we ask students to do what they do, and what support can we give them as they struggle productively with the 'desirable difficulties' of learning? If we expect them to wade into the choppy waters of learning something new, what is there to be gained in the process? Next week, we'll continue this line of thought with an in-depth look at AI and writing.



AJ Nutter

## AJ Nutter podcast featured on WITF's *The Spark*

*Self-Identities*, the podcast hosted by **AJ Nutter** '10 (Adjunct, Photography & Video) and his collaborator, **Dr. Kathryn Whitely**, was recently featured on the WITF program *The Spark*. Together Nutter and Whitely, a feminist criminologist, visited maximum security prison SCI Muncy to conduct interviews with women serving life sentences for murder. The podcast aims to engage in conversations with the women to gain a deeper understanding of who they are as individuals. "Our focus," Nutter says, "is to move away from sensationalizing their crimes and instead approach the discussions from an educational perspective, featuring in-depth interviews."

You can read the WITF article about *Self-Identities* [here](#), or listen to *The Spark*'s interview episode with Nutter and Whitely [here](#). *Self-Identities* can be found on [Apple Podcasts](#), [Spotify](#), and [iHeart Radio](#).

---



*President Molla*

## Pres. Molla shares thoughts in Chamber publication

An article by **PCA&D President Michael Molla** appears in the Spring issue of *Thriving*, a publication by the Lancaster Chamber. In this piece, Pres. Molla addresses the need for "continual learning and upskilling" in the modern economy, and writes about what the College delivers: graduates who are flexible in their thinking and skills, filled with creativity and higher-order problem-solving and communication skills. "Tomorrow's industries, not just the creative industries, but all industries, even those that are not yet imagined, will look to the creative sector for the talent to fuel their growth."

Want to read more? You can find a [digital issue of \*Thriving\* here](#); the article begins on Page 19.

---

## This Thursday: Artist Talk with Nichola Kinch

Artist **Nichola Kinch** visits PCA&D on Thursday, April 11, for a 12:45 pm Artist Talk in the Atrium. The entire College community is invited to attend the event, organized by the Fine Art Department.

Kinch, Executive Director of Academic Affairs at Temple University's Tyler School of Art and Architecture, also is a practicing artist. She's interested, she says, in "the moments in which we, as viewers, become aware of image as mediated production," and her sculpture and other works are heavily influenced by interaction with the natural world around us. Our curiosity, she says, is the basis for everything. [Learn more here](#) about Kinch's work, what's inspiring her now, and how she works at the intersection of nature and societal structures.



*Nichola Kinch*

---

## CCE & Exhibitions partner on Amtrak display case art project; here's how to participate

PCA&D's Exhibitions Department and Center for Creative Exploration have teamed up with support from the City of Lancaster Office of Public Art to host an opportunity for the Lancaster community to showcase their visual response to the prompt "Creativity is..." in an exhibition that will be installed at the Lancaster Amtrak station in two of the public art

cases from Aug. 9 through Nov. 14. The hope is to engage Amtrak station visitors and travelers through this collaborative installation that will involve the creation of artwork.

From April through July 29, community partners, PCA&D students and faculty, and Lancaster community members are invited to join a workshop, event, or visit partner curio. Gallery & Creative Supply on West Chestnut Street, starting April 15, to pick up a 6-inch-by-6-inch canvas panel to create their response to the prompt. Names of artists will be included on signage in the station cases.

Join CCE for the first panel workshop during Art at Brunch at Zoetropolis, 112 N. Water St., on Sunday, April 14, from 11 am to 2 pm!

---

## Facilities Portal has been updated on website

Planning to hold a College event and need to notify Facilities and IT? Need to file a maintenance request? Or perhaps you need to access incident reports, operating procedures in case of emergencies, or anything else that pertains to facilities operations? The website's Facilities portal has been updated, and can be found at the bottom of the website's [home page](#). Or, [click here](#).

---

## BEGINNING TO SEE THE LIGHT



© Autumn Woods '27

**Photographs from FD 111 Camera-Based Observation**

**Photography & Video Hallway Gallery**

**AD**  
Pennsylvania  
College of  
Art & Design

Foundation PHV students mount exhibition

Next time you're near the Photography & Video hallway, be sure to check out *Beginning to See the Light*, a new exhibition of photos by FD11 Camera-Based Observation students. On display is work by these Foundation students: **Aireonna Brewer, Autumn Woods, Charlie Ambers, Dahlia Navarro, Elaina Darr, Jiazell Fernandez, Naeem Holmes, Nicolas Pujato, Owen Knauer, Reece Kane, Robin Salsman, Sarah Hougasian, Tamara Lugardo, and Warren Burke.**

---

## Final week for Show and Tell in the CORE Gallery

Through this Friday, April 12, stop by the Mezzanine-level CORE Gallery (next to the elevators) to see *Show and Tell*, work by **Elizabeth Gregory '25**, Fine Art. The exhibition was curated by **Kayla Smith '24**, Fine Art. Gregory's artist statement, in part:

*My body of work utilizes a patchwork of memories to create eccentric narratives for viewers to interpret. Playing around with vibrant colors mixed with bizarre compositions and subjects gives the illusion that they are collaged with one another. The color palette I lean towards; the off-kilter lime green, holds major significance in my life. This was the color of my childhood bedroom for years, and just about everything that belonged to me was tagged with that lime green. The neon chokehold that kids who grew up in the early 2000s all had to experience defined a generation that I just fell victim to.*



*"Banana Man", by Elizabeth Gregory.*

---



## Now in the Hayden Gallery: *Home*

An exhibition of student work, *Home*, is now highlighted in the Hayden Gallery. Next time you're on campus, be sure to stop by!

Work featured is by **Hannah Aust '24**, PHV; **Jenna Cervone '24**, PHV; **Elizabeth Gregory '25**, Fine Art; **Alivia Haltom '24**, Fine Art; **Katherine Hess '25**, Fine Art; **Lexi Sills-Schueler '25**, Fine Art; **Kayla Smith '24**, Fine Art; **Kelby Weaver '24**, Illustration; **Nicole Wesoloski '24**, Fine Art; **Cameren White '24**, PHV; and **Sam Yesko '26**, PHV.

---

## Need your W-2? Find it on PlanSource

A reminder from Payroll that your W-2s can be accessed electronically via your PlanSource employee account.

**You must first log into PlanSource:** <https://plansource.ultipro.com/login.aspx>

**From the Home screen go to:** Myself>Pay>W-2>2023

Should you have any difficulty, please email [payroll@pcad.edu](mailto:payroll@pcad.edu) for assistance.

---





## Classes, workshops & retreats highlight CCE

Don't miss these upcoming highlight classes and workshops offered by the College's Center for Creative Exploration:

- [Meditation through Nature Journaling for Women](#)
- [Drawing for the Absolute Beginner](#)
- [Make and Create Weekend Retreat: PA Guild of Craftsmen & Pennsylvania College of Art & Design](#)

---

## Interested in a CCE class? Don't forget discounts and community scholarships

Faculty and staff: you can request your employee benefit for discounted Center for Creative Exploration classes for yourself as well as for your children or spouses. Email [ce@pcad.edu](mailto:ce@pcad.edu) to let them know the class or workshop you're interested in and they can work with you to get you a special code. Also, as educators, you can request scholarships for students in grades 1-12 for CCE classes. If you know a student in our community who would benefit, [head here](#) and complete the request form. Questions? Email [ce@pcad.edu](mailto:ce@pcad.edu).

---

## Hear of gig work, part-time or full-time jobs for students? Let Career Services know

Help fill our Student Portal Job Boards with opportunities for our students. They can range from gig work to part-time, and even some full-time jobs.

There is a high demand for work opportunities among our student body in both the creative and non-creative sectors.

If you hear any great opportunities please pass them along to the Career Services Team at [CareerServices@pcad.edu](mailto:CareerServices@pcad.edu) so we can connect our students to employment opportunities.

---

## College creative projects in the classroom

Faculty, if you are open to having College creative projects be part of your classroom assignments (think greeting cards from the College, Admissions welcome boxes for

deposited students, etc.), please reach out to [communications@pcad.edu](mailto:communications@pcad.edu) for more information. We'd love to work with you!

---

## Web resource: The Faculty/Staff Portal

You can find a [Faculty/Staff Portal](#) at the very bottom right corner of the [PCAD.edu](http://PCAD.edu) [homepage](#). It links to all sorts of useful information, from retention reports and class schedules to the academic calendar, maintenance and events requests, and much more.

---



**Pennsylvania College of Art & Design**  
204 North Prince St. Lancaster, PA 17603 717.396.7833

Share this email:



[Manage](#) your preferences | [Opt out](#) using TrueRemove®

Got this as a forward? [Sign up](#) to receive our future emails.

View this email [online](#).

204 North Prince Street  
Lancaster, PA | 17603 US

This email was sent to .

*To continue receiving our emails, add us to your address book.*

[Subscribe](#) to our email list.